

MASERU ARCHITECTURAL OPEN HOUSE
SATURDAY 31 AUGUST 2013

OH15

IAIN LOW
LESOTHO WORK
1982 - 1987



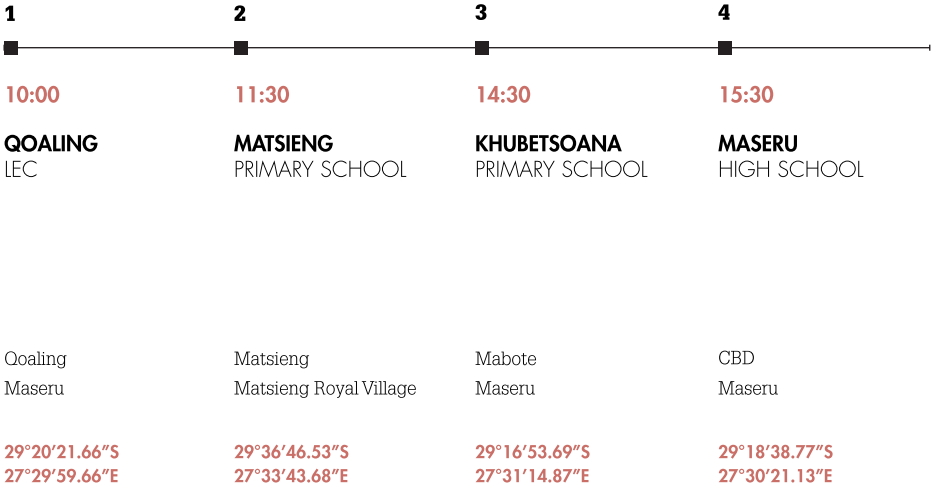
OH ARCHITECTURE

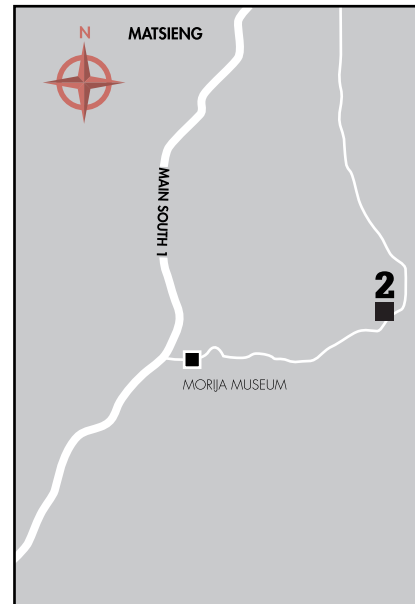
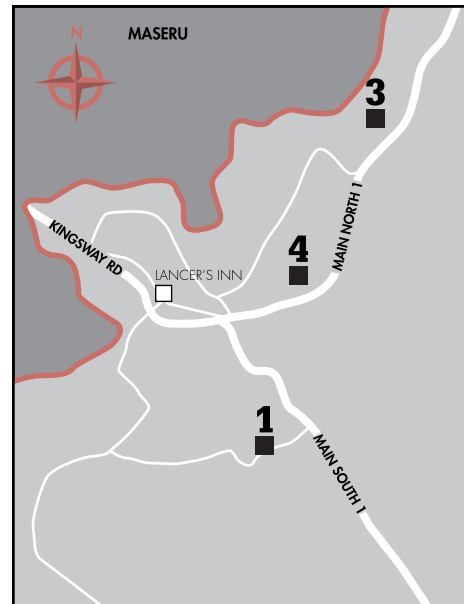
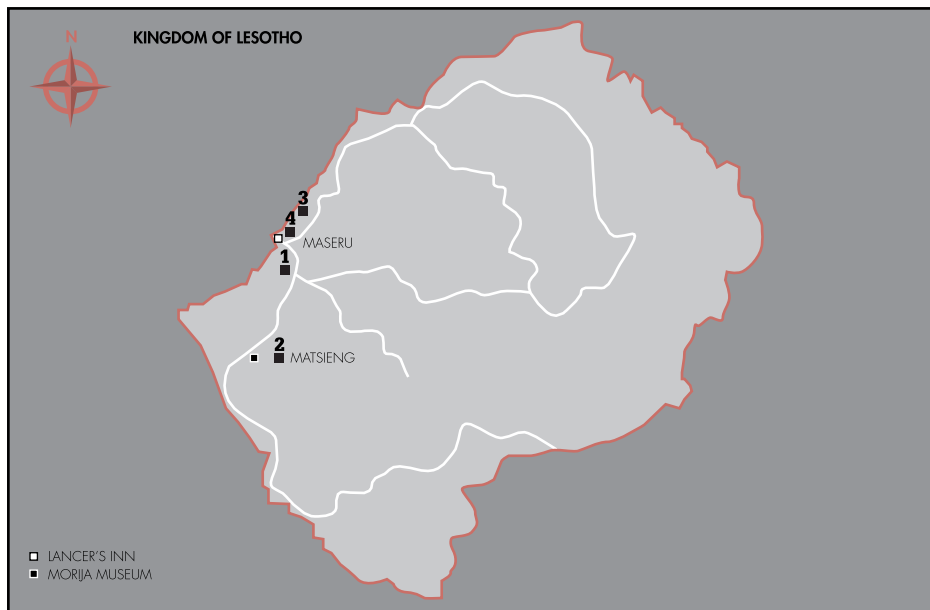
IAIN LOW LESOTHO WORK 1982 - 1987

Graduating from the University of Cape Town in 1979, Iain Low proceeded to Lesotho where he worked with Design Group Lesotho, a firm affiliated with the Building Design Group from Durban, and later with the Training for Self Reliance Project.

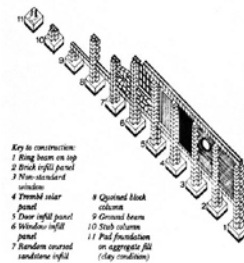
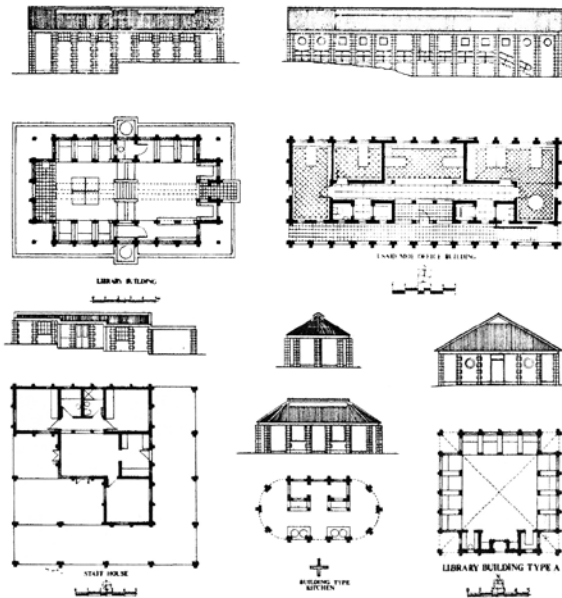
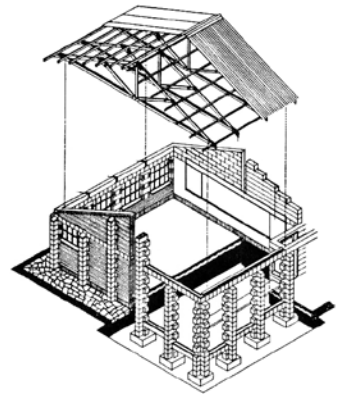
Over a period of 5 years, from 1982-1987, Professor Iain Low, architect and academic, implemented an integrated program to upgrade education and schools: the Training for Self Reliance Project [TSRP], that he designed and co-ordinated. Funded with an IDA loan from the World Bank for least developed countries, he worked on the 3rd and 4th phases of a project to design interventions at about 200 - 300 schools throughout Lesotho, thereby contributing enormously to the shortfall of education facilities in the country. A system was evolved that would not only meet the demands of this massive service delivery project, but would also ensure local economic development and the continued growth and implementation of the project long after the designers of the system have moved on.

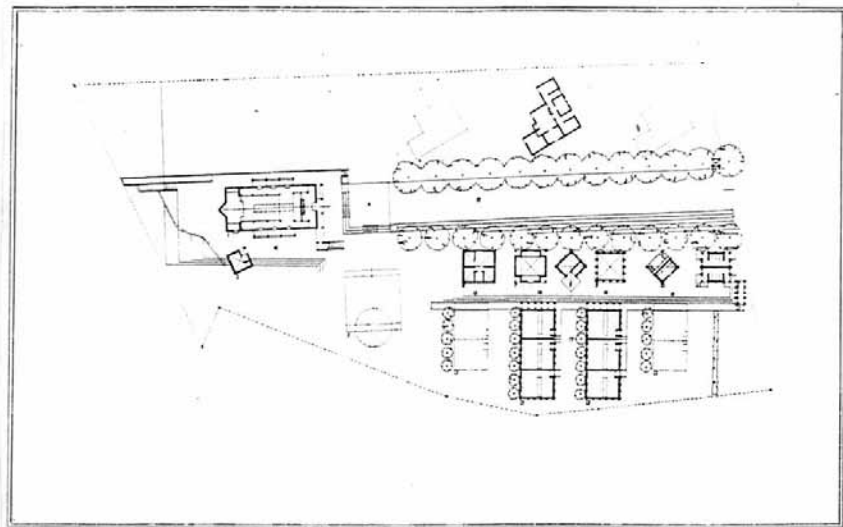
We invite you to revisit the projects with Iain Low and see how the system has endured.





THE SYSTEM





PEOPLES' FACILITY IN OOALING
MASERU LESOTHO



10:00

QOALINGLEC

29°20'21.66"S
27°29'59.66"E

Maseru



“In order to be free, you need certain constraints”

Iain Low 2013



11:30

MATSIENGPRIMARY

29°36'46.53"S
27°33'43.68"E

Matsieng

1982-87



2013

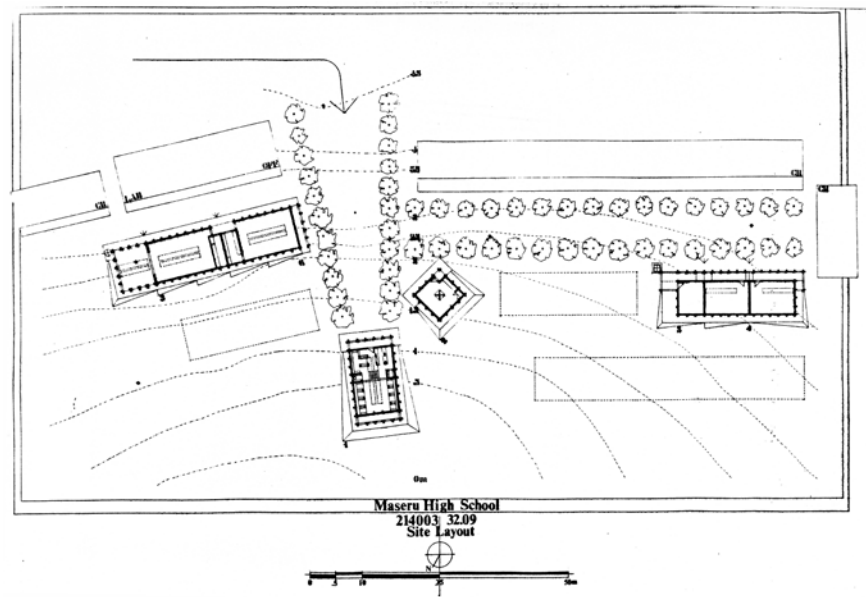


14:30

KHUBETSOANA PRIMARY

29°16'53.69"S
27°31'14.87"E

Maseru



15:30

MASERUHIGH

29°16'53.69"S
27°31'14.87"E

Maseru

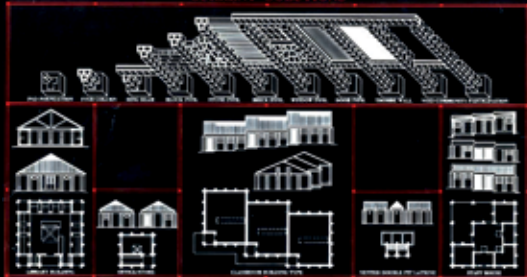
MANIFESTO

TOWARD AN ARCHITECTURE BUILDING WITH LIMITED MEANS

STATEMENT

- 1 AN ARCHITECTURE FOR SOUTHERN AFRICA MUST TAKE COGNISANCE OF THE OVERALL SOCIO-POLITICAL CONSTRAINTS OF THE REGION.
- 2 THE CURRENT DISPARITY BETWEEN THE PEOPLES OF SOUTHERN AFRICA IS REFLECTED IN THEIR HABITAT AND THE CONDITION OF THEIR RESPECTIVE SHELTER.
- 3 THE "PRACTICE OF ARCHITECTURE" IN SOUTH AFRICA IS OFTEN AN ELITIST AFFAIR WHICH THE I.S.A.A. ATTEMPTS TO CONTROL AND CAN THEREFORE CHANGE.
- 4 ANY ATTEMPT TO RESOLVE AN ARCHITECTURE FOR SOUTHERN AFRICA MUST CONSIDER: THE ABOVE IN THE LIGHT OF: LIMITED RESOURCES/MASS OF PEOPLE TO BE SHELTERED; APPROPRIATENESS OF TECHNOLOGY AND ENERGY/LABOUR INTENSIVE METHODS; & ETC..
- 5 SOLUTIONS WHICH BUILD WITH LIMITED MEANS AND ATTEMPT TO DEVELOP STANDARD BUILDING AND CONSTRUCTION TYPES WHICH ARE EASILY REPLICABLE, RESPONSIVE TO THEIR RESPECTIVE CONTEXT AND ADAPTABLE THROUGHOUT THE REGION, MUST THEREFORE BE ADDRESSED.
- 6 WHILE ARCHITECTURE RELIES ON CONCEPTUAL IDEAS, IT IS THE TRANSLATION OF IDEAS INTO BUILT FORM, GOVERNED BY THE 5 PRIMARY RESPONSES TO: 1 - CONTEXT; 2 - SPACE; 3 - FORMALITY; 4 - FUNCTION & 5 - GENERALITY, WHICH MAKE FOR GOOD ARCHITECTURE.

CURRENT SOLUTIONS



**IAIN LOW · MASERU · 1985
- I.S.A.A. CONGRESS -**

ORGANISATION:

ILZE WOLFF
LAUREN OLIVER

ACKNOWLEDGEMENTS:

IAIN LOW
MINISTRY OF EDUCATION,
GOVERNMENT OF LESOTHO
MORIJA MUSEUM TEAROOM
LANCER'S INN
DEPARTMENT OF ARCHITECTURE,
UNIVERSITY OF THE FREE STATE
CAPE INSTITUTE FOR ARCHITECTURE
OH VISITORS
KATRINE ROSENHAGEN
HEINRICH WOLFF
WOLFF ARCHITECTS

PHOTOGRAPHY:

IAIN LOW - PAGE 5, PAGE 10
HEINRICH WOLFF

OPEN SCHOOLS:

GOALING LESOTHO EVANGELICAL CHURCH

REVEREND MASEMENE

MATSIENG PRIMARY SCHOOL

PRINCIPAL MAPALO TEMEKI

KHUBETSOANA PRIMARY SCHOOL

PRINCIPAL PUSELETSO DAMANE

MASERU HIGH SCHOOL

PRINCIPAL LELIMO MOLOANTOA

oh.a open house architecture